

Partners in our local Law Enforcement community...



CHELAN COUNTY SHERIFF'S 2014 ANNUAL REPORT



CHELAN COUNTY SHERIFF'S OFFICE

401 WASHINGTON STREET, STE 1

WENATCHEE, WA 98801

(509) 667-6851

Website: <http://www.co.chelan.wa.us/sheriff>



INTEGRITY * TEAMWORK * EXCELLENCE

SHERIFF BRIAN BURNETT

Sheriff's Office Overview

The Chelan County Sheriff's Office employs 57 commissioned deputies who serve a community of almost 74,000 residents spanning an area over 2,994 miles. In addition, the agency employs 15 non-commissioned personnel who provide essential services such as Property & Evidence, Records, Finance, Executive Support, and Emergency Management. There are 9 Reserve Deputies, 3 Chaplains, and 60 volunteers who continue to help our agency deliver the highest quality of services possible.

The Sheriff's Office Command Staff is structured with the Sheriff, Undersheriff, and 3 Chiefs who oversee the divisions that make up our agency. The function of each division and unit is an important component in assuring the Chelan County Sheriff's Office maintains the professional operation expected by the communities we serve.

Our agency values the public we serve, and using a community oriented policing strategy Sheriff Burnett and his staff have fostered strong partnerships between our schools, businesses, non-profit organizations, and citizens. This type of collaboration enhances our crime fighting tactics and tends to reduce crime and the fear of crime in our communities. We strongly believe that preventing crime is a community effort and providing up to date information via Social Media and our website are pertinent to keeping our communities informed.

The Sheriff's Office strives to continually improve ourselves and to become more knowledgeable and proficient with our day to day duties. Every member of the Chelan County Sheriff's Office is committed to our Core Values and our Mission Statement.





SHERIFF'S MESSAGE

“The true measure of leadership is influence - nothing more, nothing less.”

As I finished the last year of my first term and start the first year of my second term as Chelan County Sheriff, I recognize the importance of the foundation this administration has laid over the last four years. How we proceed over the next four years and beyond is critical, not just in the role of the Chelan County Sheriff's Office Administration, but in all levels of our organization.

I've recently been personally challenged to grow in Leadership, not necessarily in administration, but Leadership. That is a challenge that I want to spread throughout the Sheriff's Office and the community we so proudly serve. I know we have great personnel at the Chelan County Sheriff's Office, but I also believe that by Discretionary Effort, we can honor those we serve by taking it to a higher level.

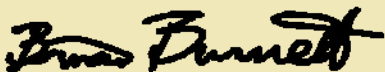
Discretionary Effort is defined as the level of effort people could give if they wanted to, but above and beyond the minimum required. What a difference you and I could make to those around us, both directly and indirectly by simply doing a little extra to take it to the next level.

Your Chelan County Sheriff's Office Administration recently teamed up with (+14) of our supervisors in leadership training centered on the theme, “Organizational Excellence Through The Power of Discretionary Effort.” I'm excited to see how this process will further develop leadership throughout our agency so we may better serve the citizens and visitors of Chelan County.

President Abraham Lincoln said, "The legitimate object of government is to do for a community of people, whatever they need to have done, but cannot do, at all, or cannot, so well do, for themselves---in their separate, and individual capacities. In all that the people can individually do as well for themselves, government ought not to interfere."

This can at times be a difficult balancing act. I further recognize that, to give the highest quality of service possible, we must utilize the resources and talents from those we partner with, to include our staff, neighboring agencies, volunteers and citizens of Chelan County.

Thank you for all you do to enhance the quality of life in Chelan County, by partnering with us to make a difference, both today and in the future.



Sheriff Brian Burnett

Core Values.....

Integrity

Serve with honesty, loyalty, consistency, and accountability with respect for others.

Teamwork

Work together, demonstrating collaboration through mutual reliability and openness while displaying flexibility to accomplish our goals.

Excellence

Deliver a superior level of commitment, responsiveness, performance and provision of services to all, with the attitude that, “Everything is worth our best effort.”

Chelan County Sheriff's Office Mission Statement

The mission of our organization is to contribute to a safe and productive community, committed to earning public trust and providing highly trained professionals. We partner with the community, utilizing available resources to provide the highest quality of service to the citizens of Chelan County.

2014 FIRE SEASON

During the summer of 2014, the emergency management staff was heavily involved with the various wildfires in, or around Chelan County. The first large fire of the season ignited in May along the Mal-Coa Highway. The 'Milepost 8 Fire' was a fast moving, wind-driven fire that threatened the Alcoa Works plant south of Malaga. The fire damaged dozens of power poles and lines causing extensive residential power outages and a partial power outage to the plant.

On July 5th the Skyline Fire in Wenatchee ignited from an aerial firework. The fire came within feet of several homes located along Skyline Drive. Again, our DEM staff was involved in coordinating the evacuation notifications in the area. We worked closely with Fire District 1, Wenatchee Police Department, and the Red Cross during this incident. No homes were lost.

The Mills Canyon Fire started on July 8th west of Entiat. It is believed to have been started as the result of faulty electrical wiring issue in an irrigation pump house, but is still under investigation. The fire immediately ran up both sides of Mills Canyon and continued burning in southeastwardly direction. Within a few days, the fire reached Highway 97-ALT and eventually Swakane Canyon. This fire engulfed over 22,000 acres and required "state mobilization" of fire resources to assist.

The Chiwaukum Creek Fire - and several other small fires - ignited on July 15th as the result of a significant lightning storm which passed through the area on the evening of the 14th. Due to low humidity and high temperatures, the fire expanded rapidly burning to the east and south along the



CHIWAUKUM CREEK FIRE



MILLS CANYON FIRE

Icicle Ridge above Tumwater Canyon. This very large fire eventually burned into the Chiwaukum Heights Estates and Coulter Creek area burning several small cabins and outbuildings. Eventually, this effort to contain this fire was placed under the same incident management team handling the Mills Canyon Fire.

On the evening of July 17th the Carlton Complex Fire in Okanogan County evolved into a firestorm due to low relative humidity, high temperatures, and relentless winds. The fire burned rapidly to the east through the Methow Valley, into the Alta Lake community, and eventually into the town of Pateros. Chelan County DEM staff

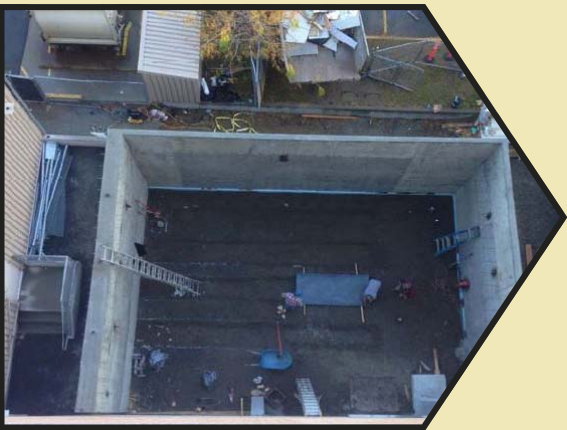
and Sheriff's deputies responded to assist that evening.

On July 19th county DEM staff was notified of the Duncan Fire - a lightning strike fire tied to the Chiwaukum Complex - was expanding quickly to the north and east in the Entiat River drainage. The Duncan Fire affected the far west end of the Entiat drainage causing closures of all the USFS campgrounds along the Entiat River. Action points were established in the fire path to manage evacuation notifications for the hundreds of homes located east of the fire activity.

During our response and support of the Carlton Complex fire, the Chiwaukum Complex Fires continued to burn. The Hansel Fire began on August 2nd which again caused us to divert resources to the Ingall's Creek area of west Chelan County. The community of Valley-Hi was placed on Level 2 evacuation notice and other homes closer to the fire were at Level 3 for nearly two weeks as the Hansel fire was contained.

Our county should recover a significant portion of the costs related to the vast wildfire response during 2014 via Fire Management Assistance Grants (FMAG) issued by FEMA. The Mills Canyon, Chiwaukum, Carlton, and Hansel fires all qualify for FMAG reimbursement. There are strict criteria and guidance to be followed for the county to receive up to 75% reimbursement of overall fire related expenses. The FMAG grants are individual for each fire and require extensive documentation showing accountability for each hour of paid overtime, equipment time, and other activities. Chelan County EM strives to recover as much potential reimburse as possible for county funds expended during the 2015 wildfire season.

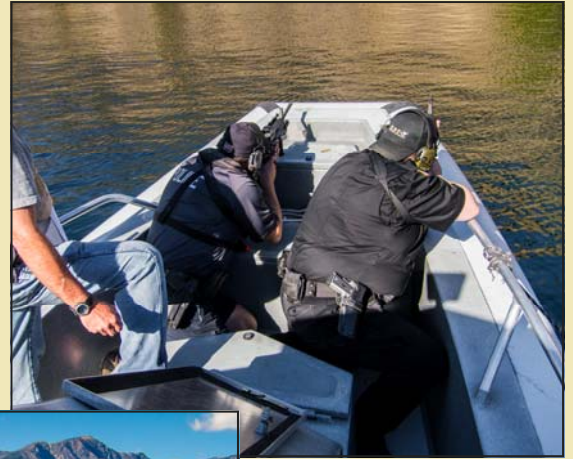
Evidence Room Expansion



The completion of the Chelan County Sheriff's Office Evidence Room upgrade in early 2014 was monumental. Employees and the general public endured months of construction leading to the loss of parking spaces and many other inconveniences, but in the end it was all worth it! The Evidence Room is now state of the art giving our agency ample room to store existing and future evidence. Marv Jeffries, our Evidence Custodian was a leading voice in design and implementation taking advantage of the latest property and evidence storage technology. The new design and flow of this project gave our agency a much needed upgrade, allowing our deputies to access a system and tools that were designed to improve the process and their efficiency.

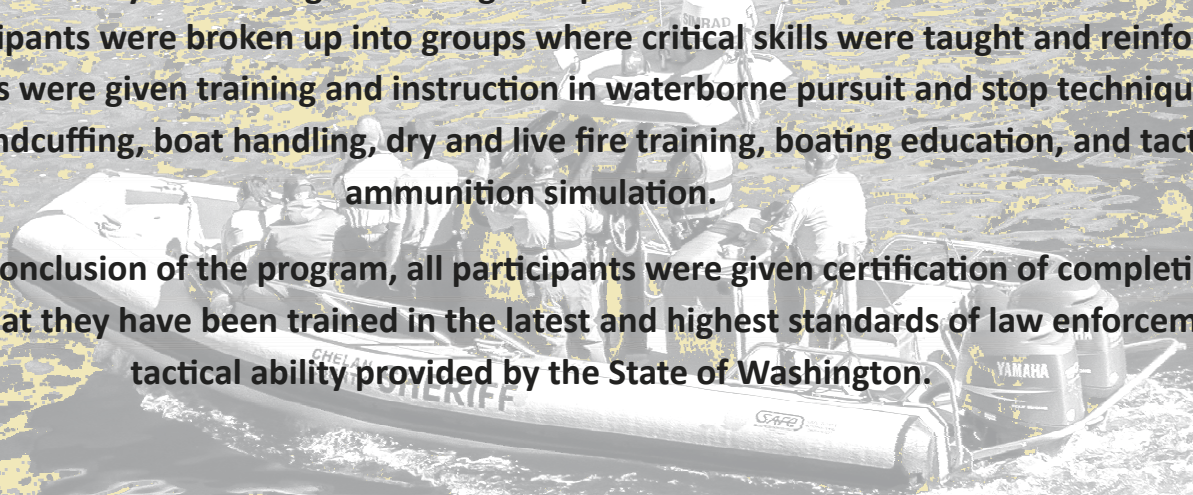
The property and evidence room is responsible for taking in and managing thousands of items of property and evidence each year. Typical property and evidence items include firearms, knives, narcotics, currency, blood/biological samples, sex crime kits, clothing, bicycles, backpacks and numerous other items. The Evidence Custodian is responsible for maintaining an accurate chain of custody over all evidential items. Chain of custody entails maintaining a documented record of the location and the possessor of evidence from its initial intake through potential testing and court use, storage, and disposition. It must be ensured that items taken in remain secure, intact, and free from alteration and contamination in order to preserve their forensic value.

2014 MARINE LAW ENFORCEMENT CONFERENCE



The Chelan County Sheriff's Office co-hosted in October, the 26th Annual Marine Law Enforcement Conference held at Campbell's Resort in Chelan. The 2-day conference brought participants from across Washington State and for the first time was open to law enforcement agencies outside of the state as well. Here they trained together using best practices that will enhance their duties on the water. Participants were broken up into groups where critical skills were taught and reinforced. Participants were given training and instruction in waterborne pursuit and stop techniques, onboard handcuffing, boat handling, dry and live fire training, boating education, and tactical ammunition simulation.

Upon the conclusion of the program, all participants were given certification of completion signifying that they have been trained in the latest and highest standards of law enforcement tactical ability provided by the State of Washington.



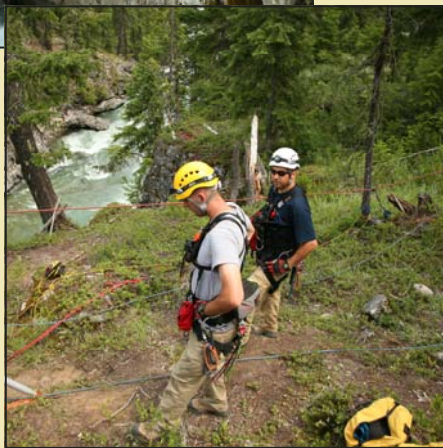
TRAFFIC ENFORCEMENT UNIT / HIGH ANGLE ROPE RESCUE TEAM



Traffic Enforcement Unit consists of one Sergeant, two traffic Deputies, and one Commercial Vehicle Truck Enforcement Deputy. They are responsible for performing traffic enforcement, traffic safety education, and collision investigations within the county. The Traffic Unit works in partnership with Chelan County Public Works regarding issues with roadways, signage, parking issues, collisions, traffic, road weight restrictions, and county code enforcement for builders / landowners / right-of-way issues. The Traffic unit also conducts patrols in construction areas as well as new or modified speed zones.



2014 TRAINING IN
STEHEKIN



High Angle Rope Rescue Team is a specialty team within search and rescue. HARRT conducts rescue and recovery operations in high angle (60-90 degree slope) and steep angle (30-60 degree) terrain. The CCSO HARRT team consists of eight commissioned Deputies. Most of the HARRT Deputies are technician level certified in rope rescue.

Several volunteers train consistently with the HARRT team, many of which are technician level certified. HARRT also works regularly along side Chelan County Mountain Rescue, a team of highly experienced, well trained volunteers who are willing to respond to emergencies. These volunteers are essential to the operation of CCSO HARRT.

All CCSO HARRT team members are equipped with personal gear that allows them to respond directly from patrol duty or their residence when needed. There is also a large cache of gear in a designated trailer stored in a central location in the county. Through consistent training and dedication, the CCSO HARRT team is able to respond quickly when needed to high and steep angle rescues within Chelan County.



COLUMBIA RIVER DRUG TASK FORCE

In 2014 the **Columbia River Drug Task Force** saw a significant increase in heroin use in the Wenatchee Valley. CRDTF did 19 drug related investigations where the drug dealers arrested were selling both heroin and methamphetamine. 19 cases involved just methamphetamine. Heroin came in a close second with 16 cases. When comparing the numbers to 2013 this is roughly a 35 percent increase in heroin cases from last year. Heroin and methamphetamine continue to be our focus at the Columbia River Drug Task Force and we targeted middle to upper level drug dealers in the Wenatchee Valley. We arrested over 50 drug dealers in the Wenatchee Valley including Wenatchee, Rock Island, East Wenatchee, Yakima and Chelan.

We recognize that the majority of the property crimes in the Wenatchee Valley stem from heroin and methamphetamine addicts. These addicts trade the stolen property to their drug dealers or sell them to others on the street to pay for their drug of choice. CRDTF served numerous search warrants throughout the year locating stolen firearms and other stolen property. We were able to prosecute these suspects for property crimes in addition to their drug offenses and return the stolen items to their rightful owners.

CRDTF arrested two of the most well known drug dealers in the Wenatchee Valley this year. Both suspects are currently awaiting trial. 14 people in the Wenatchee area were arrested in connection with the organization. They were a part of a large Mexican Drug Trafficking Organization that had ties to the Yakima area and stretched all the way to the Midwest. Seizures from this case yielded 1,153 grams of methamphetamine with a street value of \$115,300, 440 grams of heroin with a street value of \$66,000, and numerous vehicles purchased with proceeds from drug sales.

CRDTF continues to fight vigilantly on the war on drugs. We continue to strive to target drug dealers supplying methamphetamine and heroin to the Wenatchee Valley.



Emergency Management - The Chelan County Department of Emergency Management (DEM) is a sub-organization of the Sheriff's Office. The Emergency Management sergeant works with a team of three additional DEM specialists to manage all-hazard emergency response, search & rescue, and forest service patrol throughout the county. This includes contracting with the cities of Chelan, Entiat, Cashmere, and Leavenworth for emergency management services. The EM staff is responsible for planning, mitigation, response and recovery during any all-hazard emergencies. We work closely with local fire districts and county public works during, and after the wildfire seasons. The Sheriff's Office Volunteer Services Unit is a vital to our many successes within the DEM office. We rely heavily on our trained volunteers to assist during emergency situations (i.e. fire evacuation notifications, search & rescue missions, and logistical support). Without dedicated volunteers it would be difficult to provide timely and adequate emergency response.

In May 2014, Chelan County DEM staff sponsored and facilitated a commodity study and hazardous material response exercise in the City of Chelan. Chelan County was one of only eight entities receiving a State Hazardous Materials Exercise Program (HMEP) grant in 2014. During the months of March, April, and May the county DEM staff began a commodity study of hazardous materials be transported through the City of Chelan on State Highway 97-ALT. This study focused on the potential for a hazmat incident on the highway affecting one of the nearby schools and local neighborhoods. The extensive commodity study was followed by a table-top exercise in which emergency responders and the Chelan School District worked through a mock hazardous material spill/release related to a commercial vehicle accident occurring near Osborne Elementary School. The table-top exercise was facilitated by DEM staff and involved representatives from the Chelan School District, Fire District 7, Chelan EMS, State DOT, Washington State Patrol, and the Sheriff's Office. A well organized plan was developed to keep students 'sheltered in place' at the school while emergency responders dealt with the hazardous material incident on the highway. The cooperation and teamwork demonstrated by all agencies throughout this exercise was very reassuring.

Volunteers - The Chelan County Sheriff's Office Volunteer Services Organization consists of dedicated community members serving the agency and the county in various capacities. Volunteers give of their own time, effort, and often their own resources to assist our agency. Historically, Sheriff's Office volunteers formerly known as the "Posse" – were primarily involved with search and rescue (SAR) operations throughout the county. SAR missions are still a major function of the CCSVS unit. However, we have expanded their roles to include a variety of additional assignments. Many of our volunteers are currently trained to assist with: traffic control, road blocks, evacuation notifications, evidence search, radio communications, emergency management planning, and all-hazard incident response.

The Chelan County Volunteer Services Executive Board oversees the CCSVS organization. The executive board is comprised of both Sheriff's Office employees and volunteers. There are four primary units within the volunteer organization itself. Each unit is managed by a "unit leader" who reports to the "Volunteer Coordinator". The volunteer coordinator communicates directly with the Emergency Management Sergeant and other EM staff.

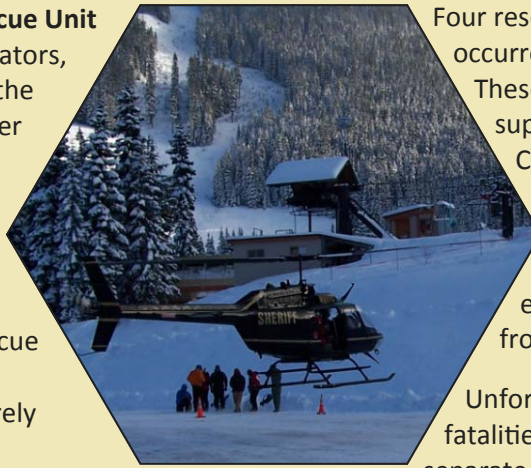
The volunteer membership continues to grow each year, allowing us to establish a very dedicated and professional group of community members who attend the regular trainings and respond to missions. The Sheriff's Office greatly appreciates our volunteers and realizes how much they assist us during critical times. To become a member, an individual simply needs to visit the Chelan County Sheriff's Office webpage and download both a 'Volunteer Services application' and 'Emergency Worker' application - (*a background check is required prior to acceptance*). The completed forms can be mailed or turned in to the Sheriff's Office Emergency Management Office – 408 N. Western Ave in Wenatchee.



The **Chelan County Search and Rescue Unit** consists of skilled deputies, coordinators, and dedicated volunteers. Due to the variety of terrain and bodies of water existing in our county, several different sub-units are tied to the overall search and rescue organization. Within the Sheriff's Office the High Angle Rope Rescue Team (HARRT) and Swift Water Rescue Team are often needed to assist in specific rescue scenarios. We also rely heavily upon various volunteer SAR organizations. Chelan County Mountain Rescue Association, three separate snowmobile clubs, the local amateur radio group, and other volunteer organizations are often called upon to assist with missions.

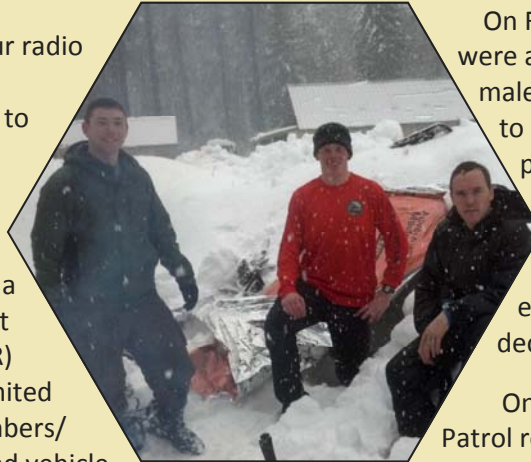
In 2014 the Chelan County Sheriff's Office Search and Rescue Unit responded to 37 missions involving a variety of circumstances throughout the county. Search and Rescue (SAR) incidents included, but were not limited to: lost/overdue hikers, injured climbers/hikers, injury snowmobile or off-road vehicle accidents, subjects stranded in the wilderness, and skiing accidents. Several of the incidents involved hikers or climbers with minor injuries needing assistance in exiting the wilderness areas to receive medical attention. However, a few situations involved major injuries.

In February, SAR team coordinators and responders were notified that a family of six had become stranded at their season cabin located off of Sears Creek in the west county. The group had skied into the primitive cabin from their vehicles parked on the White River Road nearly 2 miles away. A series of relentless snow storms passed through the area during the next three days dropping three feet of snow in a 72-hour period. One of the subjects had to hike to high ground for cell service and requested rescue of his family. SAR coordinators requested assistance from Chelan County Public Works just to plow a path to the vehicles. A Chelan County PUD snow-cat crew deployed with deputies on snowmobiles to access the cabin and rescue the subjects.

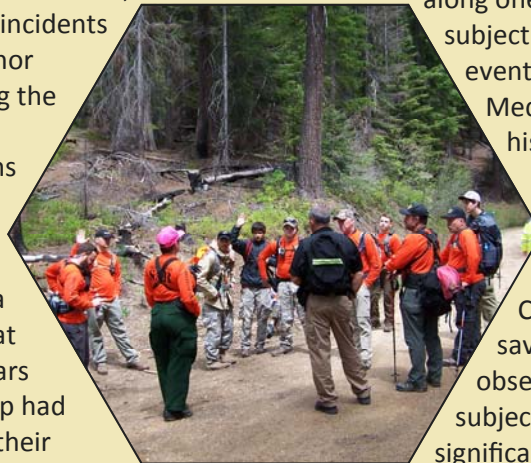


Four rescues of injured climbers / hikers occurred on Mount Stuart in 2014. These missions required supplemental response from Chelan County Mountain Rescue and the use of hoist capable helicopters from - either King County or Naval Base Whidbey Island - to extricate the injured subjects from the mountain.

Unfortunately, there were five fatalities this past year related to four separate situations:

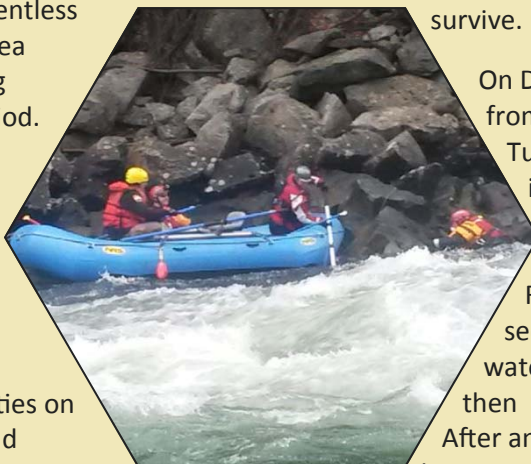


On February 19th, SAR coordinators were advised of two overdue adult males in a Jeep Rubicon attempting to traverse deep unplowed snow on primitive USFS roads in the Derby Canyon area. SAR deputies eventually located the vehicle off the road and down a steep embankment. Both subjects were deceased.



On March 31st, Mission Ridge Ski Patrol reported a male adult skier lost control and collided with a large tree along one of the resort's ski runs. The subject was brought off the slope and eventually transported to Harborview Medical Center. He did not survive his injuries.

An adult female was swept into the main channel of the Wenatchee River west of Cashmere when she attempted to save her dog which had been observed struggling in the water. The subject was swept downstream into significant rapids prior to be pulled from the river by a passing raft. She did not survive.



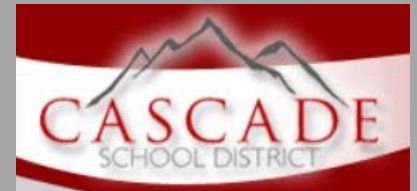
On December 12th a male subject ran from deputies near the mouth of the Tumwater Canyon in Leavenworth intentionally jumping into the very cold and swollen Wenatchee River. The subject was seen struggling in the water downstream, but then disappeared from sight. After an extensive search, he has not yet been located.

SEARCH & RESCUE



SCHOOL RESOURCE OFFICER

During the school year, Monday through Friday, 8:00 to 4:00, our schools are likely to have the highest concentration of citizens in Chelan County. The schools themselves are communities unto themselves, with their own governmental bodies, rules and regulations and problems. It only makes sense, therefore, to provide law enforcement services to these communities. The School Resource Officer program (SRO) provides that service, and so much more.



While SRO's mainly serve as Law Enforcement Officers (LEO), they also act as counselors, mentors and teachers. They are in place to help when students and staff need them. Not just as a LEO, but as another caring adult who wants the best for them.



"Having a police officer in the building on somewhat of a regular basis helps students develop respect for law enforcement and view officers in a positive light. Often times, young children only have interactions with law enforcement in the event of a crisis. Because students have the opportunity to interact with Officer Patterson in a positive sense, they have come to view him and police officers in general as safe, caring adults they can trust." Kelli Doherty – Principal, Icicle River Middle School.

One of the current projects Deputy Patterson has been working on is the updating of each districts "Crisis Plans". After the tragic incident at Marysville/Pilchuck High School this year, the need for this has become more evident. Deputy Patterson has researched state and federal mandates and guidelines for these plans and have started toward implementation of some necessary changes. Due to the variety of school environments, it is necessary to develop and individualized crisis plan for each building, which is quite a time-consuming, but needed task.

Deputy Patterson is also working on the development of a county-wide "Student Threat Assessment Team". This team will consist of personnel from the various school districts, Mental Health, Juvenile Probation, Juvenile Court and others. It will allow us to quickly convene the group in the event of a student displaying threatening behavior. The system is based on the process developed and used by the Salem/Kaiser (Oregon) school district and is the national standard for Student Threat Assessment.



Cascade School District is currently in the process of putting forth a bond initiative that, if passed, will allow for the building of two new school buildings (Cascade High School and Osborn Elementary School) and substantial upgrading of the other buildings. The district has expressed an interest in having the Sheriff's Office involved in the design phase of planning to address needed security features. These improvements will greatly enhance student and staff safety while, hopefully, making the school environment more "user friendly".



School Reported Offenses	Cashmere	Chelan	Entiat	Manson	Chelan County Totals
Alarm	0	6	0	32	38
Assault	0	1	1	2	4
Drugs	2	1	0	0	3
Harassment	2	1	0	2	5
Malicious Mischief	5	1	1	1	8
Sexual Offense	1	0	0	1	1
Threatening	1	0	0	1	2
Theft	3	2	1	1	7
Other	35	31	8	16	90
Total	48	43	11	56	158

The Chelan County Sheriff's Office has three working canine teams with a 4th on the way.

Detective Carlos Rodriguez has Narcotics K9 Reefer. Reefer is a black Labrador mix-breed who is trained in drug detection. Det. Rodriguez and Reefer regularly assist the Columbia River Drug Force, other local law enforcement agencies, businesses, and the local school districts. Case law from both the Washington State and U.S. Supreme courts have restricted the use of drug detection dogs in law enforcement. Though still useable, Reefer's statistics have steadily declined over time.

Deputy Sheriff Mike Lamon manages patrol dog Axel. Axel is a large pure-breed German Shepard trained in apprehension, tracking, and evidence area search. Axel works with all area law enforcement agencies and the local Multi-agency SWAT team.

Getting a police K9 program started is a costly venture, more than the budget of Chelan County can sustain. A single dog costs an average of \$20,000.00 (per dog) to get patrol ready. This includes the initial cost of the dog, the intense training out of the area and out of state for both dog and handler, a specialized vehicle, and all of the handlers' and dogs' equipment. The Sheriff's Office received 2 large donations in 2013 and 2014 to provide for additional K9 teams. Numerous other donations were also received, and those funds were also directed towards K9 acquisition and training.

In late 2014, we added Deputy Aaron Shepard and his patrol dog Reno. Reno is also a pure-breed German Shepard. Reno is trained in apprehension, tracking, and evidence search. Shortly after Reno returned from his training in late 2014, the City of Wenatchee Police retired their 2 law enforcement dogs. The City of Wenatchee Police also agreed to assist in funding Chelan County K9 operations for the time being, to ensure that police K9's are available for their use in the City of Wenatchee.

For 2015, Sheriff's Office Corporal Monika Haynes will begin the process of acquiring, outfitting, and training a Search & Rescue dog. In 2014, the Sheriff's Office responded to 42 search and rescue calls. K9 teams from outside Chelan County were frequently called in to assist. The average response time for an outside K9 search dog is 2 to 4 days. Having our own search dog in Chelan County may reduce that response time to hours. Corporal Haynes' dog will also work on evidence detection, emergency response for natural disasters, and urban search and rescue within our local communities. Most, but not all, of this search dog's funding came from a Leavenworth area high school student's senior fundraising project.

As outlined above, outside funding and donations are critical to keep the Sheriff's Office K9 program viable.

**Drug Dog Reefer
Involved Arrests By
Year:**

2011 = 10

2012 = 7

2013 = 6

**Patrol Dog Axel
Involved Incidents By
Year:**

2012 = 16

2013 = 13

2014 = 25



K-9 REEFER



K-9 AXEL



K-9 RENO

K-9



City of Cashmere

City of Cashmere	2014	2013	2012	2011	2010
City Patrol Hours	6977	7033.5	6440	5982	6089
Calls for Service	948	938	855	1063	1047
Adult Arrests	110	87	117	116	54
Juvenile Arrests	14	27	10	11	6
Violent Offenses	0	3	0	0	5
Injury Traffic Collision	1	6	1	3	4
Non-injury Collisions	64	63	48	50	57



City of Chelan

City of Chelan	2014	2013	2012	2011	2010
City Patrol Hours	19774	19338	16548	17678	16790
Calls for Service	2177	2286	2317	2287	2564
Adult Arrests	337	346	418	426	288
Juvenile Arrests	33	23	12	30	59
Violent Offenses	6	3	6	1	2
Injury Traffic Collision	5	3	3	2	9
Non-injury Collisions	129	100	119	118	131
Marine Related Offenses	90	134	204	153	313



City of Entiat



City of Entiat	2014	2013	2012	2011	2010
City Patrol Hours	2324	2206	1706	1774	1836
Calls for Service	222	272	236	262	326
Adult Arrests	20	34	14	33	24
Juvenile Arrests	2	4	0	1	4
Violent Offenses	1	1	0	1	1
Injury Traffic Collision	1	0	0	1	4
Non-injury Collisions	10	5	5	11	16

City of Leavenworth



City of Leavenworth	2014	2013	2012	2011	2010
City Patrol Hours	9449	8614	6659	6297	7574
Calls for Service	1267	1297	1336	1279	1396
Adult Arrests	137	121	132	114	79
Juvenile Arrests	32	23	13	11	10
Violent Offenses	1	3	1	0	3
Injury Traffic Collision	1	3	3	3	5
Non-injury Collisions	82	81	74	81	86

2014 Chelan County Crime Summary

Contract City Patrol Hours	City of Cashmere	City of Chelan	City of Entiat	City of Leavenworth
January	608	1629	240	547
February	549	1406	188	554
March	537	1440	171	616
April	628	1454	177	765
May	589	2185	205	787
June	544	1742	197	948
July	616	1870	203	861
August	592	1544	187	700
September	602	1684	179	707
October	541	1539	171	1392
November	619	1678	222	786
December	554	1603	184	786
Total Patrol Hours	6979	19774	2324	9449

Crime Summary	City of Cashmere	City of Chelan	City of Entiat	City of Leavenworth	Other County	Chelan County Totals
Violent Offenses	0	6	1	1	27	35

Suicides	2014	2013	2012
Chelan County Totals	4	12	19

Concealed Pistol Licenses	2014	2013	2012	2011
	1306	1415	1269	893

Civil Process	City of Chelan	City of Entiat	City of Leavenworth	Wenatchee Area	Other County	Chelan County Totals
Civil Process Serves	373	17	212	1616	3	2221

Collision Investigations	City of Cashmere	City of Chelan	City of Entiat	City of Leavenworth	Other County	Chelan County Totals
Accident - Injury	1	5	1	1	37	45
Accident - Non-injury	64	129	10	82	472	757
Accident - Fatal	0	1	0	0	4	5
Total	65	135	11	83	513	807

Activity Summary	City of Cashmere	City of Chelan	City of Entiat	City of Leavenworth	Other County	Chelan County Totals
Adult Charges / Arrests	110	337	20	137	611	1215
Calls for Service	948	2177	222	1267	9372	13986
Domestic Violence Incidents	33	50	9	30	254	376
Juvenile Charges / Arrests	14	33	2	32	63	144
Marine Incidents	0	21	1	2	66	90
Officers Assaulted	0	1	0	0	2	3
Warrant Arrests	0	4	3	0	317	324
Total	1105	2623	257	1468	10685	16138

Criminal Arrests Not Traffic or Domestic Violence	City of Cashmere	City of Chelan	City of Entiat	City of Leavenworth	Other County	Chelan County Totals
Burglary	1	8	2	11	15	37
Disorderly Conduct	0	2	0	2	4	9
Drug Violation Arrests	3	46	0	8	68	125
Harassment	9	4	0	5	41	59
Indecent Exposure / Lewd Conduct	0	0	0	1	3	4
Kidnapping	1	3	0	2	5	11
Malicious Mischief	5	7	0	11	19	42
Minor Operating Veh - After Consuming Alcohol	0	0	0	0	1	1
Minor Possession or Consuming Alcohol	1	6	0	1	4	12
Obstructing an Officer (False Statement)	0	5	0	0	10	15
Possession of Stolen Firearm	0	1	0	0	8	9
Possession of Stolen Property	1	3	0	3	7	14
Possession of Stolen Vehicle	0	0	0	0	7	7
Rape	0	1	0	1	0	2
Resisting Arrest	3	6	0	4	10	23
Robbery	0	1	0	0	3	4
Taking a Motor Vehicle Without Permission	0	2	0	0	2	4
Theft	13	29	0	14	22	78
Trespassing	5	6	0	5	26	42
Vehicle Prowl	2	3	0	1	1	7
Violation of Court Order	0	1	0	0	5	6
Warrants	0	4	3	0	317	324
Total	44	138	5	69	578	834

Reported Offenses	City of Cashmere	City of Chelan	City of Entiat	City of Leavenworth	Other County	Chelan County Totals
Arson	0	0	0	0	0	0
Assault	37	54	11	50	275	427
Bomb Threat	1	0	0	0	0	1
Burglary	8	35	1	11	103	158
Child Abuse / Neglect	1	1	0	0	3	5
Criminal Homicide	0	0	0	0	0	0
Disorderly Conduct	44	141	12	80	321	598
Drugs (other than marijuana)	4	32	0	3	43	82
DUI	5	24	3	6	61	99
Embezzlement	0	0	0	0	0	0
False Reporting	0	7	0	4	9	20
Felony Eluding	0	0	0	0	3	3
Forgery / Fraud / ID Theft	0	0	0	0	8	8
Gambling Offenses	0	0	0	0	0	0
Kidnapping / Child Custody	0	0	0	0	4	4
Larceny - Theft	67	96	6	55	257	481
Liquor Violation (alcohol offenses)	5	21	0	5	17	48
Littering	1	8	1	0	44	54
Malicious Mischief	18	24	6	9	75	132
Marijuana	1	6	0	3	4	14
Noise Violations	7	28	4	22	112	173
Rape - Forcible	0	1	0	0	6	7
Robbery	0	0	0	0	1	1
Sex Offenses (Excluding Rape)	2	5	1	6	36	50
Trespass	6	52	3	52	307	420
Vehicle Theft	0	5	0	1	7	13
Violation of Court Orders	6	10	1	5	58	80
Weapons Violations	3	8	1	0	29	41
Total	216	558	50	312	1783	2919

Collision Investigations	City of Cashmere	City of Chelan	City of Entiat	City of Leavenworth	Other County	Chelan County Totals
Accident - Injury	1	5	1	1	37	45
Accident - Non-injury	64	129	10	82	472	757
Accident - Fatal	0	1	0	0	4	5
Total	65	135	11	83	513	807

Domestic Violence Arrests	City of Cashmere	City of Chelan	City of Entiat	City of Leav- enworth	Other County	Chelan County Totals
Assault	8	20	4	20	125	177
Child Rape / Molestation	0	2	0	0	2	4
Criminal Homicide	0	0	0	0	0	0
Criminal Trespass	5	0	1	0	0	6
Harassment	4	1	0	0	14	19
Interfere w/ reporting of DV	1	0	1	1	8	11
Kidnap / Imprisonment	1	0	0	2	6	9
Malicious Mischief	6	6	3	3	36	54
Rape	0	0	0	0	0	0
Violation of Court Order	8	10	0	6	45	69
Total	33	39	9	32	236	349

Violations	City of Cashmere	City of Chelan	City of Entiat	City of Leavenworth	Other County	Chelan County Totals
Attempt to Elude Police Vehicle	0	0	0	0	3	3
Cell Phone Related	6	2	1	0	27	36
Defective Equipment	3	26	4	1	54	88
DUI / Physical Control	5	26	4	6	59	100
Driving While License Suspended	14	58	6	12	187	277
Hit and Run - Attended	1	2	0	0	2	5
Hit and Run - Unattended	2	3	0	1	13	19
Marine Violations	0	221	2	0	62	285
Negligent Driving	0	2	0	1	6	9
No Proof Liability Insurance	35	151	14	24	484	708
Operator License Violations	25	86	7	9	266	393
Other Moving Violations	49	82	5	25	225	386
Other Offeses	5	7	0	4	4	20
Parking Violations	4	15	1	211	59	290
Pedestrian Violations	0	0	0	0	0	0
Reckless Driving	5	2	1	1	20	29
Seatbelt Violations	3	18	3	3	47	74
Speeding	20	69	70	24	765	948
Speeding in Construction Zone	0	0	0	0	4	4
Speeding in School Zone	3	43	1	2	104	153
Vehicle License Violations	13	80	2	11	140	246
Total	193	893	121	335	2531	4073

2014 Reserve Graduation

This year we had four Reserve Deputies graduate from the Reserve Academy alongside candidates from the Wenatchee Police Department and the Douglas County Sheriff's Office. These Deputy candidates participated in the academy from February 12th to June 23rd. Each candidate received a limited commission upon graduation.

The Reserve Academy was designed to mirror the full time academy but on a much more condensed schedule. The candidates packed hundreds of hours of training into five short months all the while juggling their full time jobs and family lives. Each member of the graduating class donated over 330 hours of academy time on top of the hours spent studying. It took an immense amount of motivation to power through this dual responsibility.

The leadership at the Chelan County Sheriff's Office recognizes the value and importance of our volunteer members and the employee volunteers who give of their time and expertise to train. Each individuals' many talents and positive attributes clearly enhance the service that we are able to give to our citizens and visitors to Chelan County.

Budget Overview

The Sheriff's budget for 2015 has been approved at \$9,786,593. This represents a 3.3% increase over the initial budget for 2014.

The biggest factor for the budget increase is the cost of living increases included in the collective bargaining agreements for the Deputies, Sergeants, and Non-Commissioned staff, ranging between 2-2.5%. Some of the other areas that saw increases in approved budgets due to increased costs include Motor Pool, ammunition, and uniforms.

The 2015 budget does include anticipated costs for another Reserve Academy, tentatively scheduled for the fall of 2015. This would allow our department to expand the number of Reserve Officers we have for the department. The Reserve Officers have the same standards as our Commissioned Officers, and the same powers of arrest, thus enhancing our Law Enforcement Services across the county.

Another newly budgeted item is some Wildfire Response equipment for our Emergency Management Services division. Wildfires are typical in Chelan County. With our EM staff and deputies responding to fires, serving evacuation notices, and manning roadblocks, it is important to ensure that they have the equipment to keep them safe, as they are protecting our citizens and visitors.

We did have some supplemental budget appropriations for the Sheriff's office in 2014. This was mainly due to the Law Enforcement Services we contracted to perform for the Grant County PUD, in response to the Wanapum Dam repairs. Our agency was contracted, along with several other agencies, to conduct shoreline and water patrol, while the water levels are lower leading up to the Wanapum Dam. The costs for our agency was nearly \$500,000 dollars for 2014, which was reimbursed by Grant County PUD. These patrols are continuing into 2015, which was not budgeted for. This will likely result in another supplementary budget request for 2015 to cover any costs, all of which are billed back to Grant Co. PUD.

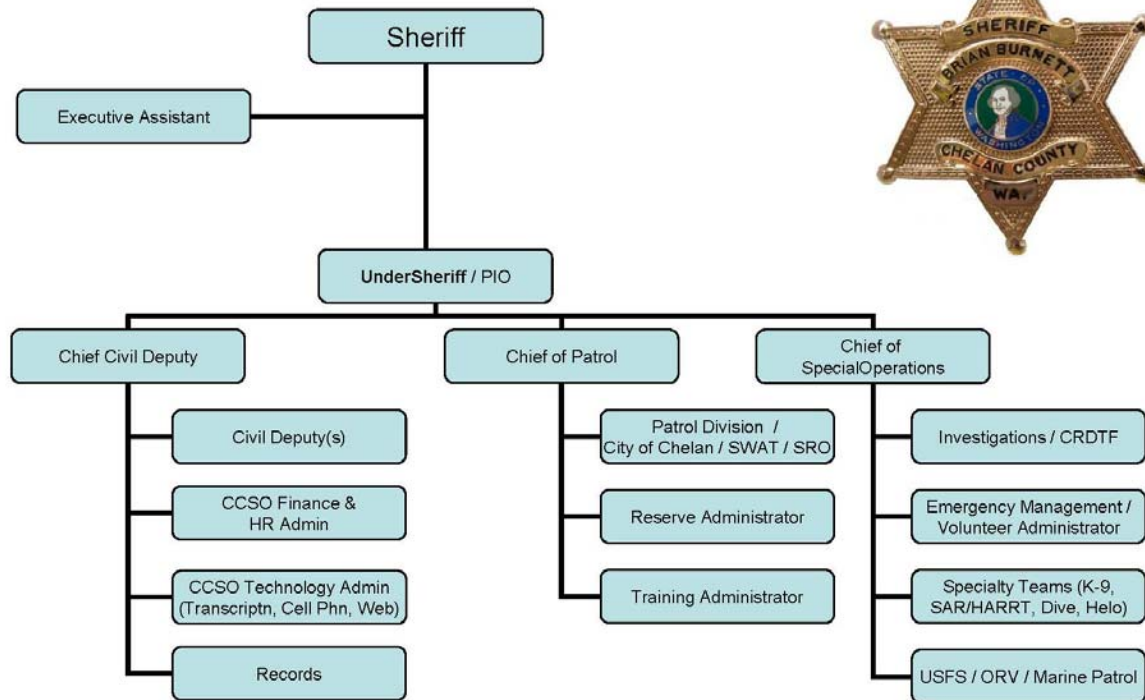


New CCSO Snowmobile



New CCSO Personal Water Crafts

Chelan County Sheriff's Office



2014 Annual Award Recipients

Support Staff of the Year

Peg Robert

Support Staff of the Year * Honorable Mention

Kim Oglesbee

Volunteer of the Year

Mike Battis—Reserve Deputy

Volunteer of the Year * Honorable Mention

William Demarest—Search & Rescue

Lester Stoltz—Swift Water Rescue

Night of 1000 Stars

Deputy Lamon — Top DUI

Deputy McCue — Proactive Traffic

Sheriff Burnett's "Beyond The Badge Award"

Emergency Management Staff

Sgt. Kent Sisson

Mike Bryant

Eileen Ervin

Rich Magnussen

Deputy of The Year

Adam Musgrove

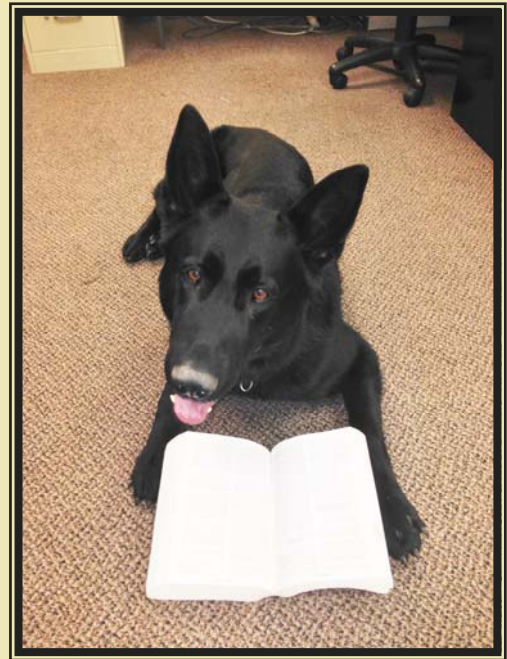
Deputy of The Year * Honorable Mention

Ernie Senseney

Mark Hegberg



2014 HART TRAINING— DEPUTY MCLEOD, DEPUTY MANNIN, AND DEPUTY NORTON



K-9 AXEL STUDYING THE FINER POINTS OF TRACKING.



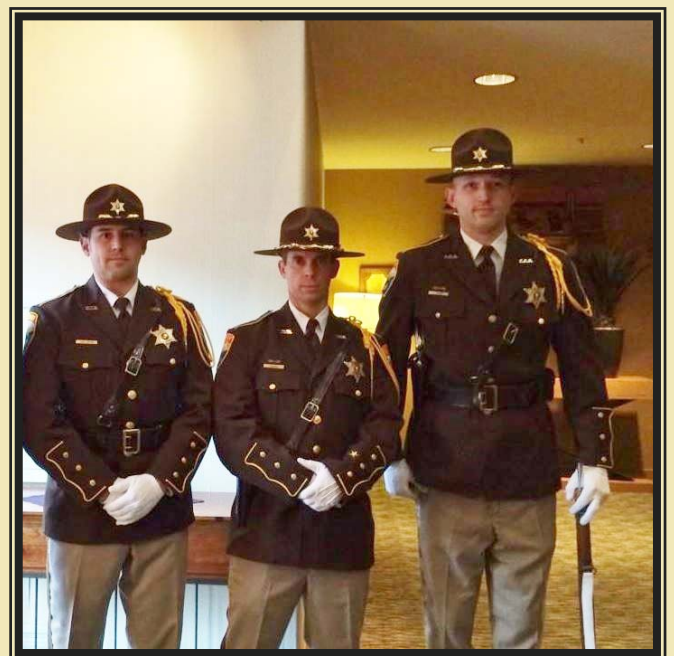
DEPUTY DUNLAP BEING SWORN IN AT GRADUATION FROM THE BASIC LAW ENFORCEMENT ACADEMY.



DEPUTY MORRISON TAKING IT ALL IN.



2014 PROMOTION CEREMONY WHICH INCLUDED DETECTIVE SEABRIGHT AND DETECTIVE RODRIGUEZ



THE CHELAN COUNTY SHERIFF'S OFFICE HONOR GUARD. DEPUTY NORTON, DEPUTY FRANKLIN, AND DEPUTY MANNIN

CHELAN COUNTY SHERIFF'S OFFICE



Sheriff
Brian Burnett



Undersheriff
John Wisemore



Executive Assistant
Jan Brincat



Chief of Patrol
Dave Helvey



Chief of Special Operations
Jason Mathews



Chief Civil Deputy
Valerie Karnes



Sergeant
Jeff Middleton



Sergeant
Bruce Long



Sergeant
Kent Sisson



Sergeant
Jerry Moore



Sergeant
Mike Harris



Sergeant
Andy Zimmerman



Sergeant
Rob Huddleston



Sergeant
Chris Foreman



Sergeant
Kevin Files



Sergeant
Scott Lawrence



Sergeant
Jason Reinfeld



Corporal
Monika Haynes



CHELAN COUNTY SHERIFF'S OFFICE



Corporal
Jeremy Mathena



Corporal
Randy Lake



Corporal
Mike Langford



Detective
Josh Mathena



Detective
Mitch Matheson



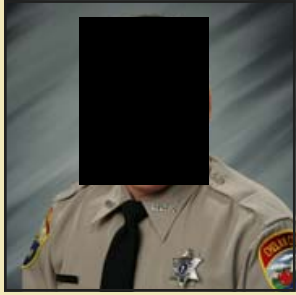
Detective
Jeff Dilks



Detective
Randy Grant



Detective
Carlos Rodriguez



Detective
Aaron Seabright



Deputy
Manny Brincat



Deputy
Dave Rinehart



Deputy
Bob Francis (Retired)



Deputy
Brent Patterson



Deputy
Mike Simmons



Deputy
Tim Erwert



Deputy
Doug Corulli



Deputy
Sean Duke



Deputy
Levi Ferguson



Deputy
Bryan Jones (Retired)



Deputy
Carl Mohns



CHELAN COUNTY SHERIFF'S OFFICE



Deputy
Mike McLeod



Deputy
Dan McCue



Deputy
Matt Franklin



Deputy
Jennifer Tyler



Deputy
Lee Risdon



Deputy
Mark Hegberg



Deputy
Paul Nelson



Deputy
Chris Eakle



Deputy
Brad Norton



Deputy
Jeremy Mannin



Deputy
Dominic Mutch



Deputy
Mike Lamon



Deputy
Brett Peterson



Deputy
Adam Musgrove



Deputy
Ryan Moody



Deputy
David Flick



Deputy
Ernie Senseney



Deputy
Scott Moen



Deputy
Aaron Shepard



Deputy
Jerid Sutherland



CHELAN COUNTY SHERIFF'S OFFICE



Deputy
Daane Dunlap



Deputy
Mike Morrison



Emergency Management
Eileen Ervin



Records
Lynne Orendor



Records
Debra Foltz



Records
Bob Cochran



Evidence
Marv Jefferies



Emergency Management
Mike Bryant



Records
Peg Robert



Records
Rachel Jones



Records
April Moore



Records
Kim Oglesbee



Records
Jen Ramm



Records
Karrie Wolsborn



Emergency Management
Rich Magnussen



Records
Wendy Jones



K-9
Reefer



K-9
Axel



K-9
Reno

